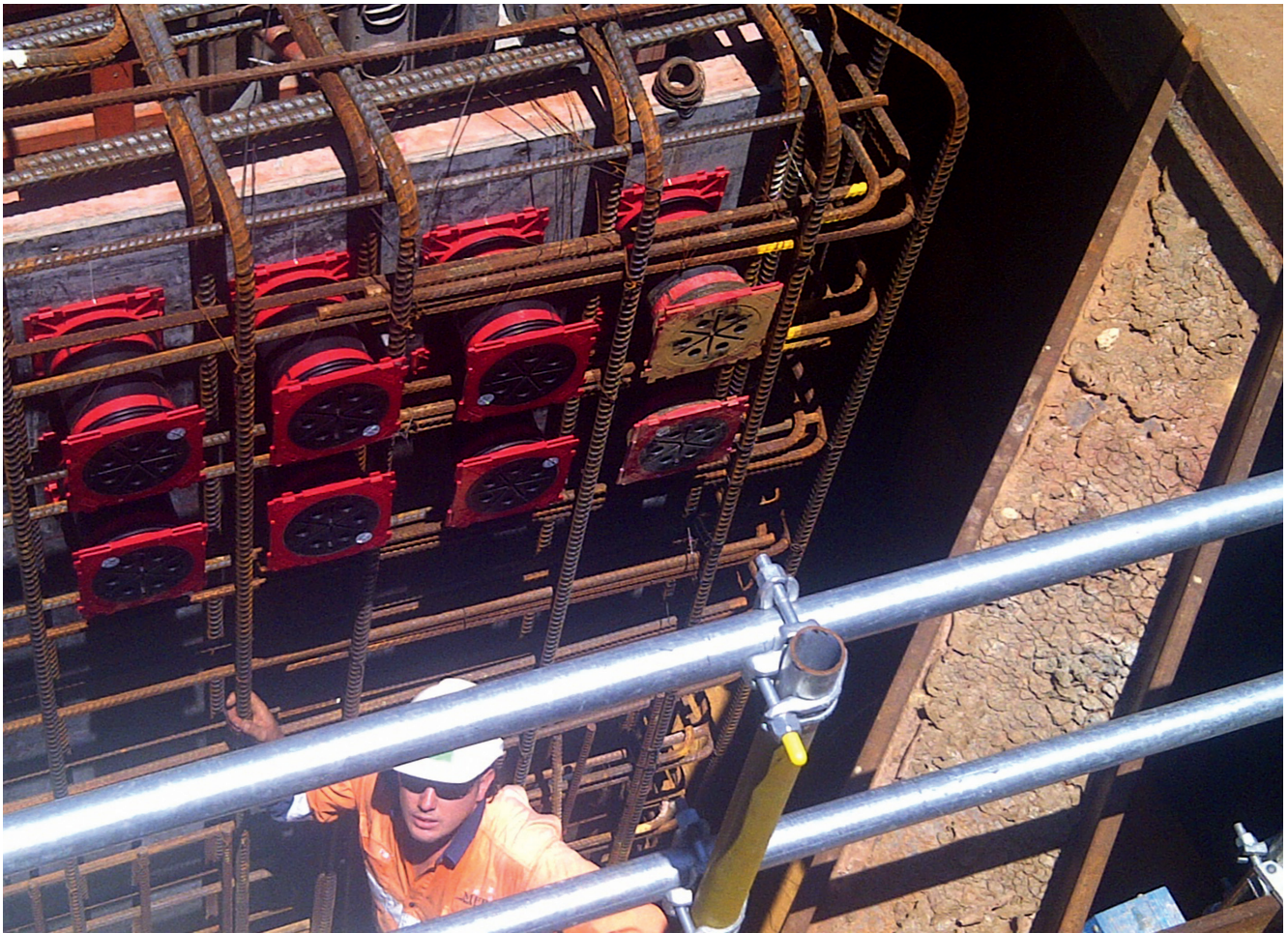


Always. Reliable. Tight.



UNDERGROUND CABLE SEALING BY ANTEC ENGINEERING, AUSTRALIA

PERTH WATERFRONT, ELIZABETH QUAY

WATERTIGHT BALE SEALING SYSTEM HSI 150



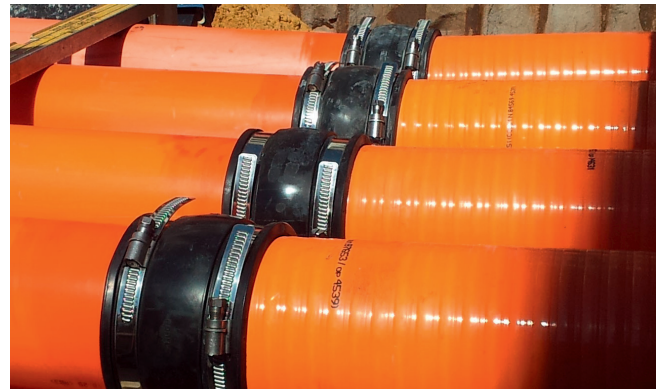
HSI 150-K2 wall inserts, installed in the formwork.



HSI 150-K2 after concreting casement.



Installation of Hateflex flexible conduits to wall inserts.



Connection of flexible conduits to rigid conduits.

The company Antec Engineering Pty Ltd.

FACTS



Antec is a leading supplier of a broad range of products for the mining, minerals processing, construction and infrastructure industries in Australia.

With branches in Sydney, Melbourne, Brisbane, Adelaide and Perth they provide superior customer service and delivery for a broad range of products. Additionally they work with major contractors to deliver customised project solutions to meet the individual requirements of the client and the job. Antec are the exclusive distributor of the Hauff-Technik range of cable & pipe sealing products.

PROJECT INFORMATION AND SOLUTIONS PROVIDED BY HAUFF-TECHNIK

Project description	The Perth Waterfront Development is an initiative by the West Australian Government to create a world class precinct that will distinctly transform the Perth city connecting the Swan River to the CBD, creating a lively array of public terraces, promenades, civic spaces, office space, apartments and hotels.
The challenge	The mix use precinct required a pit and duct system to provide power across the site covering 10 hectares. As the site is located next to the river, the water table is very high. Western Power engineers identified a need to install a mechanical sealing system to prevent water ingress entering the pit and duct system. Acting on Western Power's suggestions Wood and Greive Engineers specified the use of Hauff-Technik sealing systems. Due to the demanding soil condition the use of Hateflex flexible conduits were also installed to counteract the movement between the pits and the liquid limestone conduit encasement.
Products used	HSI 150-K2 wall insert 250 mm in thickness HSI 150-M168 system covers Hateflex 14150 flexible conduits 1.5 m in length KES-M150 HTV joiners

Hauff-Technik GmbH & Co. KG

Robert-Bosch-Straße 9
89568 Hermaringen, GERMANY

Tel. +49 7322 1333-0
Fax +49 7322 1333-999

office@hauff-technik.de